

**CUSTOM**<sup>®</sup>

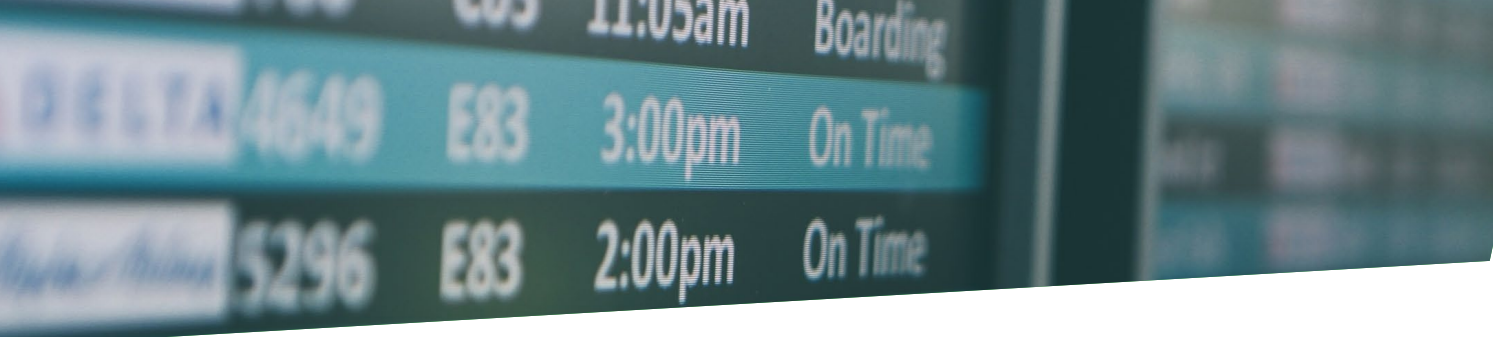


# TK306

LED 3" COLOR LABEL AND  
TICKET PRINTER



**COLOR**  
R-EVOLUTION



- 1 **PHOTOGRAPHIC PRINT QUALITY** (1200 dpi)
- 2 **LED PRINT HEAD** WITH NO MOVING PARTS
- 3 PRINTS ON **STANDARD** - AND EVEN **RECYCLED** - PRINTER PAPER
- 4 UNBEATABLE PRINT **SPEED** AND COMPLETELY **SILENT** OPERATION
- 5 **PERSONALISED “ON-DEMAND”**: SPOT PRINTING FOR SINGLE OR FEW COPIES AND NO MORE UNUSED TICKETS/LABELS

The TK306 is the smallest LED DRY TONER color printer with photographic print quality (1200 dpi) and zero edge bleed.

The TK306 is the first fully featured solution to do away with pre-orders of tickets and wasteful unused tickets after the event; it is therefore ideal for personalised on-demand and spot printing and visual identification applications (badges/tickets/single ID cards).

The TK306 prints on normal printer paper, and even recycled paper, for compliance with environmental requirements, combining high quality color output with respect for the environment.

The LED print head with no moving parts ensures zero need for the nozzle maintenance typical of inkjet and laser printers.

All through single printer: TK306 is a multi tiered printer allowing to replace multiple printers.

TK306 is also a full color ISO card printer: instantly print ISO cards on heavy paper as alternative to vinyl and plastic printed cards.

**The TK306 offers unlimited personalisation options with unequalled print speed and completely silent operation.**

## SPECIFICATION

- Technology: electrophotographic LED (cyan, magenta, yellow)
- Resolution: 1200 × 1200 dpi
- Speed: 2-6 IPS (50-150 mm/s)
- Interfaces: USB 2.0 HS, Ethernet 10/100
- Paper width: 25-86 mm
- Print width: 80 mm
- Page length: 53-550 mm
- Paper thickness: 0.060 - 0.25 mm
- Fan fold or paper roll with external roll holder (max 203 mm)
- Barcode printing (including QRcode and barcode PDF417 2D)
- Backlit blue 16 × 2 LCD display
- Panel: power + 8 function keys
- Cutter: rotary (full cut)
- Cutter life: 1 million sheets
- Sensors: paper out, notch/hole, cover open
- Toner settings: 4 density levels
- Windows driver
- Power: available for 110 V and 220 V
- Dimensions: 198 (L) × 380 (D) × 205 (H) mm
- Accessories: presenter to hold the ticket ideal for self-service applications

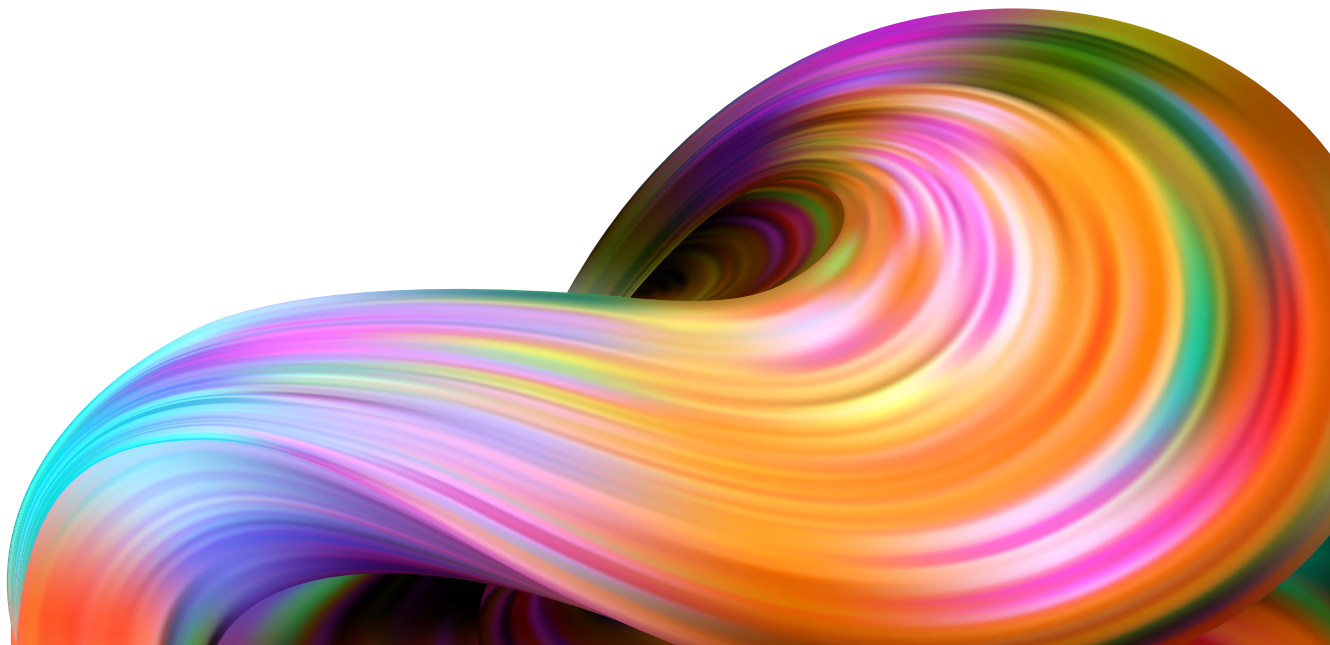
## MARKETS

**ENTERTAINMENT** (sports and events ticketing, personal invitations, wristbands)

**VISUAL IDENTIFICATION** (meetings, incentive, conferences, exhibitions, badges)

**RETAIL** (vouchers, promo, coupons, loyalty cards, shelf tag)

**AVIATION** (first & business class, lounge invitations, vouchers, miles redemption, loyalty cards)



# TK306

LED 3" COLOR LABEL AND  
TICKET PRINTER



## CONSUMABLES AND SPARE PARTS

Image drum: one image drum cartridge (CMY) with toner

Toner cartridge: all-in-one CMY

Other parts: drive belt, fuser, cutter, pick up roll



[WWW.CUSTOM.BIZ](http://WWW.CUSTOM.BIZ)

