

KPM862

RFID ticket printer for OEM integration

With an original CUSTOM RFID HF/UHF printing module (optional), a CIS sensor for notch/gap detection and "stock control" reading and guaranteed alignment, as well as optional dual ticket feeder module with which 2 different kinds of paper can be handled. Ideal for modern kiosks with a slim design, less moving (TCO reduction) and full ticket scanning all in one device!

- 1D/2D barcode supported
- Ticket width from 40 to 86mm
- Easy setting
- Ticket tickness from 70 to 255gsm
- Printing speed 250mm/sec
- USB / Ethernet / RS232 interface
- No paper wasting
- Fully automated paper loading
- Manage large paper roll pulling
- Fanfold paper supported



CHARACTERISTICS

- 1D/2D stock control
- Printer Set and CPT software
- Custom made RFID HF/UHF (optional)
- CIS for notch/gap detection and "stock control" reading
- Dual feeder with adjustable paper width (easy installation)
- Front ejector to ensure the ticket drop inside the kiosk (option)
- Selector + ejector to deflect the ticket in a special compartment of the kiosk, ideal for RFID applications (option)

APPLICATIONS:

- Self service ticketing
- Parking tickets
- Railway tickets
- Metro tickets

SOFTWARE:



SOFTWARE PrinterSet : to update logos, edit characters, set operating parameters and update the printer firmware. It allows you to create a file including the different SW customizations and send them to the printer via the interface provided, for easy and fast setting.

- Auto-installing drivers for Win 7, 8, 8.1, 10 (32-64 bit support)
- CustomPowerTool

AVAILABLE VERSIONS:

- Serial+USB+Ethernet 24V CIS
- Serial+USB+Ethernet 24V CIS + Dual Feeder

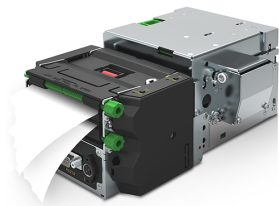
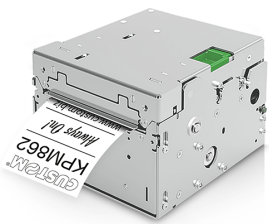
ACCESSORIES

- Veriprint: ticket original digital copy
 - RFID
 - Dual feeder
 - Front ejector
 - Selector + ejector
-

TECHNICAL SHEET

Printing Method	Thermal with fixed head
Number of dots	8 dots/mm (203 dpi)
Resolution	203 dpi
Printing (mm/sec)	220 mm/sec (high speed)
Character set	PC437, PC850, PC860, PC863, PC865, PC858
Supported Barcode	1D and 2D: UPC-A, UPC-E, EAN13, EAN8, CODE39, ITF, CODABAR, CODE93, CODE128, CODE32, PDF417, DATAMATRIX, AZTEC, QRCODE
Printing Format	Height/Width from 1 to 8, bold, reverse, underlined, italic
Printing Direction	Normal, 90°, 180°, 270°
Paper width	from 40 mm to 86 mm
Paper weight	from 70 to 255 g/m ²
Paper thickness	max 280 μ m
Roll Dimension	max 300 mm
Sensors	Head temperature, paper presence, paper presence on output, front and upper cover open, external near paper end paper, tilting slide position (only for models with selector), dual feeder paper input (only for dual feeder models)
Emulation	CUSTOM/POS
Interfaces	RS232 / USB / Ethernet
Flash Memory	2 MB internal + 8 MB external
RAM Memory	640 KB internal + 8 MB external
Drivers	Win 7, 8, 8.1, 10 (32-64 bit support)
Software Tools	PrinterSet, CustomPowerTool
Power supply	24 Vdc \pm 10%
Medium consumption	1.12 A (12,5% dots turned on)
Head Life	100Km / 100M pulses
MCBF	1.500.000 cuts
Operating temperature	-20°C + 60°C
Dimensions	163.8(L) x 96.5(H) x 152.5(W) mm (standard model) 182.9(L) x 96.5(H) x 152.5(W) mm (model with ejector) 241.6(L) x 96.5(H) x 152.5(W) mm (model with selector) 240.9(L) x 96.5(H) x 155.5(W) mm (model with dual feeder) 260(L) x 96.5(H) x 155.5(W) mm (model with dual feeder + ejector) 318.7(L) x 96.5(H) x 155.5(W) mm (model with dual feeder + selector)

MODELS



915LK010100700

PRINTER KPM862 ETH USB RS232

915LK010200700

PRINTER KPM862 ETH USB RS232

DF

CUSTOM SPA - Via Berettine, 2 - 43010 Fontevivo PR - VAT: IT02498250345 - TEL: +39 0521 680111 - FAX: +39 0521 610701 - UNIQUE CODE: T180W10

The technical data on this website are not binding and may be changed without advanced notice.

Last update: 03 March 2020