

BIXOLON
GOVERNMENT

*GAME
CHANGER*



GOVERNMENT SOLUTIONS

Governments the world over are faced with balancing finances. Central government wish to develop infrastructure whilst local government have to be more austere. Difficult economic conditions are seeing governments work smarter and technology is allowing them to do this - smarter public services, smarter education and smarter military.

A smarter work force demands a smarter city, so governments are investing in the Internet of Things, drones, driverless transportation, blockchain and 5G networks with many of these advancements benefitting other areas too.

Investing in digital transformation, using Big Data and the Cloud, government infrastructure and services are working smarter and mobilising workers to act more effectively and more precisely. RFID is being used to augment previous barcode-only applications and previously wired solutions are becoming wireless. Security is now a key consideration in any application.

BIXOLON is a leading company in the government printing market providing products and solutions that incorporate a variety of technologies to meet the changing trends of the government industry.

POSTAL / COURIER

Postal organisation are looking to be “greener”. As the circular economy grows, so does the need to provide more sustainable printing solutions.

BIXOLON’s energy saving and smart battery printers offer the option of a more environmentally-friendly linerless labelling solution that can improve your postal printing needs and save you money.



Receiving / Shipping

- Printing labels for goods at the point of receipt
- Reducing walk times and errors by labelling at the point of dispatch
- Easy control and management of printers and label designs from wireless handheld and tablet devices
- Print labels whenever and wherever on demand to streamline ship to order operations



Proof of Delivery

- Generate up to 40% more labels per roll and significantly reduce waste with linerless printing solutions
- Notification of next delivery schedule when consignee’s absence by B-linerless™
- Create immediate and accurate delivery notes or invoices anywhere on the road
- Easily provide new documents for unforeseen changes of delivery information
- Minimize downtime and delays for frequent repair services caused by accidental drops
- Streamline the order-to-cash process to increase profitability



Point of Sales

- Highly reliable printers and accessories
- Printable discount coupons with the receipt
- Compatibility with all major operating systems
- Expand the sales with cloud printing supports
- Compatibility with payment solutions

PUBLIC SAFETY / UTILITIES

As workforces are mobilised BIXOLON's dedicated Mobile printers and fixed printers supporting standalone operation are well placed to serve their needs. Ergonomic and lightweight with the ability to connect wired or wirelessly, the operating environment can be internal or external depending on your receipt, label or ticket printing needs.



e-Citation

- Increase workforce productivity
- Eliminate paperwork and manual errors
- Seamless data exchange with controlling offices
- Added accuracy and time saving benefits



Parking Management

- "always-on" solution to provide round the clock accessible
- Improved customer experience and quality of service
- Reduce the each parking cashier labour cost
- Design flexibility, creating more functional and attractive communities



Document & Records Management

- Fulfilling data protection regulation
- Effectively organising and tracking files
- Providing solution to manage inventory and retention schedules
- Quickly & cost-effectively locate and retrieve critical information
- Increase employee productivity



Asset & Facility Management

- Increase visibility of asset by centralizing serial numbers, parts numbers
- Augment existing system with label printers that are highly compatible with market-leading programming languages
- Cost-effective printing solutions to easily create and manage label designs
- Simplify setup and installation process of printers using intuitive, user-friendly features



Meter Reading

- Eliminate tedious and resource-intensive procedures for coordinating route splits and sizes by automating and continually optimizing the management of electric, gas and water
- Use the meter reading solution to supports for various customer's order
- Collect the load profile, time-of-use and meter data in the field via printers
- Increase the efficiency of meter reading operations

NATIONAL AND REGIONAL ADMINISTRATION

Like so many markets, Governments are seeing a more mobile, data led workforce with collaborative efforts to fulfil their service requirements, so BIXOLON's portfolio is ideally placed to meet their breadth of marking needs. Mobile and fixed printers that are fully featured as standard, but providing a series of configurable options and accessories to offer an efficient, secure print solutions.



Asset & Facility Management

- Increase visibility of asset by centralizing serial numbers, parts numbers
- Augment existing system with label printers that are highly compatible with market-leading programming languages
- Cost-effective printing solutions to easily create and manage label designs
- Simplify setup and installation process of printers using intuitive, user-friendly features



Document & Records Management

- Fulfilling data protection regulation
- Effectively organising and tracking files
- Providing solution to manage inventory and retention schedules
- Quickly & cost-effectively locate and retrieve critical information
- Increase employee productivity



e-Voting

- Streamline voter registration and reduce voting times
- Increase the security and reliability of collected data
- No ambiguity in interpreting an electronic vote
- Cost saving for envelopes, forms and any documentations

EDUCATION

BIXOLON's personal identification solutions, including wristband printing, means staff, students and visitors can be safely managed in the schools and colleges. Equipment can also be managed with secure labels and RFID print-encoding. Mobile and fixed printers offer secure wireless; WLAN and Bluetooth, to ensure a safe infrastructure for your labelling processes.



Asset & Facility Management

- Increase visibility of asset by centralizing serial numbers, parts numbers
- Augment existing system with label printers that are highly compatible with market-leading programming languages
- Cost-effective printing solutions to easily create and manage label designs
- Simplify setup and installation process of printers using intuitive, user-friendly features



Document & Records Management

- Fulfilling data protection regulation
- Effectively organising and tracking files
- Providing solution to manage inventory and retention schedules
- Quickly & cost-effectively locate and retrieve critical information
- Increase employee productivity

XT Series

4-inch Industrial Label Printer

- Direct Thermal and Thermal Transfer label printing
- 203, 300 or 600 dpi(XT5-40 only) print resolution options
- Printing at speeds of up to 14 ips (356 mm/sec - XT5-40)
- 3.5-inch(XT5-40), 2.4-inch (XT2-40) TFT colour LCD
- Optional 4.3-inch full colour touch LCD (XT5-40N)
- Various options: Auto Cutter, Peeler, Rewinder, Rewinder + Peeler
- Print out a label via the stand-alone function (XT5-40 only)
- Side loading Ribbon and Media



XT2-40

XT5-40N

XT5-40NR

4-inch RFID Industrial Label Printer

- Direct Thermal and Thermal Transfer label printing
- 203, 300 or 600 dpi print resolution options
- UHF RFID print and encode capability
- Extremely close-spaced RFID inlay encoding support (minimum pitch of 0.6 inch / 16 mm)
- RFID auto-calibration simply reads the RFID tag location
- Printing at speeds of up to 14 ips (356 mm/sec - XT5-40)
- 4.3-inch full colour touch LCD
- Various options: Auto Cutter, Peeler, Rewinder, Rewinder + Peeler



XL5-40

4-inch Linerless Desktop Label Printer

- Direct Thermal Linerless label printer
- Fast linerless Printing at speeds of up to 6 ips (152 mm/sec)
- Equipped with Anti-jamming, Anti-curling and long-lasting two-platen rollers
- Extreme reliability guaranteed in the harshest of environments. Supports BIXOLON's media supply, B-linerless™, and other BIXOLON certified media



XD Series

4-inch Desktop Label Printer

- Direct Thermal and Thermal Transfer options
- Mid-tier (XD5 series) and Entry level (XD3 series)
- Printing at speeds of up to 7 ips (178 mm/sec - XD5-40d)
- Compact clamshell design with intuitive menu buttons and optional LCD
- Suitable for both ½-inch and 1-inch core ribbon (74 m and 300m)



XD5-40tR/SLP-TX400

4-inch RFID Desktop Label Printer

- Direct Thermal and Thermal Transfer label printing
- Printing at speeds of up to 7 ips (178 mm/sec - SLP-TX400R) 6 ips (152 mm/sec - XD5-40tR)
- UHF RFID print and encode capability
- Extremely close-spaced RFID inlay encoding support (minimum pitch of 0.6 inch / 16 mm)
- RFID auto-calibration simply reads the RFID tag location



RFID



SLP-TX420/SLP-TX400

SLP-DX420

4-inch Desktop Label Printer

- Direct Thermal (DX420) and Thermal Transfer (TX420, TX400) options
- Printing at speeds of up to 7 ips (178 mm/sec)
- 203 dpi and 300 dpi options
- Field-installable Peeler and Auto Cutter



SLP-DX420

SLP-TX420

SLP-TX220/SLP-DX220

2-inch Desktop Label Printer

- Direct Thermal (DX220) and Thermal Transfer (TX220) options
- Printing at speeds of up to 6 ips (152 mm/sec)
- 203 dpi and 300dpi options
- Field-installable Peeler and Auto Cutter



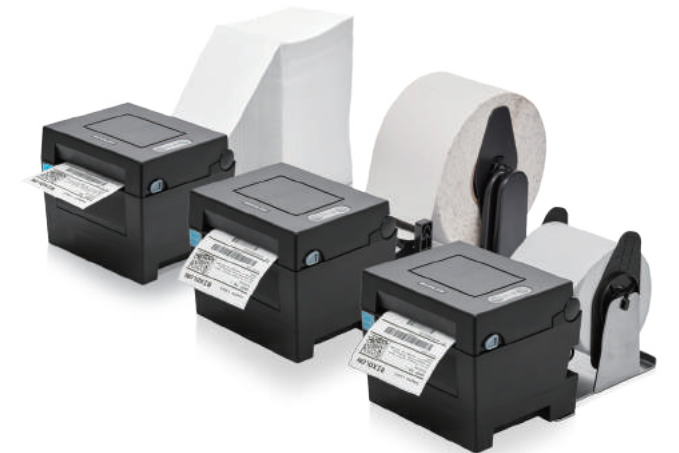
SLP-DX220

SLP-TX220

SLP-DL410 Series

4-inch Desktop Label Printer

- Direct Thermal
- Supporting a wide range of media types such as fan-fold or large labelling
- Compact and space-saving design
- Printing at speeds of up to 5 ips (127 mm/sec)
- SLP-DL410KV supports a built-in converter (from DC12V to DC24V) and cigar jack power cable



XM7-40/SPP-L410

4-inch Mobile Label Printer

- Liner and Linerless label printing
- Printing at speeds of up to 5 ips (127 mm/sec - XM7-40), 4 ips (102 mm/sec - SPP-L410)
- 1.8 m / 6 ft. drop rate and IP54 water and dust proof
- Easy to set up colour LCD (XM7-40 only)
- Embedded Peeler and Paper Guide (XM7-40 only)
- 6,800 mAh (XM7-40), 2,850 mAh (SPP-L410) high battery capacity for all-day use
- Supporting up to 66 mm (XM7-40), 56 mm (SPP-L410) media roll diameter



XM7-40

SPP-L410

SPP-L3000/SPP-L310

3-inch Mobile Label Printer

- Label and Linerless label printing
- Printing at speeds of up to 5 ips (127 mm/sec)
- 2.1 m / 7 ft. drop rate and IP54 water and dust proof
- Easy to set up mono LCD (SPP-L3000 only)
- Embedded Peeler and Paper Guide (SPP-L3000 only)
- 2,850 mAH battery capacity
- Up to 66 mm (SPP-L3000), 49 mm (SPP-L310) media roll diameter supported



SPP-L3000

SPP-L310

SPP-R410

4-inch Mobile Receipt Printer

- Receipt and Linerless label printing
- Printing at speeds of up to 90 mm/sec
- 1.8 m / 6 ft. drop rate and IP54 water and dust proof
- 2,600 mAH battery capacity
- Easy Bluetooth pairing via NFC
- Supporting up to 57 mm media roll diameter



SPP-R310

3-inch Mobile Receipt Printer

- Receipt and Linerless label printing
- Printing at speeds of up to 100 mm/sec
- 1.8 m / 6 ft. drop rate and IP54 water and dust proof
- 2,600 mAH battery capacity
- Easy Bluetooth pairing via NFC
- Supporting up to 50 mm media roll diameter



SPP-R200III/SPP-R210

2-inch Mobile Receipt Printer

- Receipt and linerless label printing
- Compact and rugged design with light-weight
- Printing at speeds of up to 100 mm/sec (SPP-R200III), 90 mm/sec (SPP-R210)
- 2.1 m / 7 ft. (SPP-R200III), 1.2 / 4 ft. (SPP-R210) drop rate
- 1,200 mAH Battery capacity
- Optional magstripe card reader (SPP-R200III)
- Up to 48 mm (SPP-R200III), 30 mm (SPP-R210) media roll diameter supported



SPP-R200III

SPP-R210

SRP-380/SRP-350plusIII SRP-350III/SRP-330II

3-inch POS Printer

- BIXOLON's signature printers including premium level SRP-380, mid-tier SRP-350plusIII, SRP-350III and entry level SRP-330II
- Fast Printing at speeds of up to 350 mm/sec (SRP-380 only)
- High reliability of 250km TPH with its Auto Cutter guaranteed up to 3 million cuts (SRP-380 only)
- 180, 203 or 300 dpi (SRP-380 only) print resolution options
- Wireless and wired connectivity options



SRP-350plusIII

SRP-350

SRP-380

SRP-330II

SRP-Q300 Series

3-inch POS Printer

- BIXOLON's cube printers including SRP-Q300, SRP-Q300B (Built-in battery), SRP-Q300H (B-gate mPOS Hub) and SRP-QE300 (Entry-level)
- Compact cube design
- Compatible with all major operating systems
- IP21 water and dust proof
- Printing at speeds of up to 220 mm/sec



B-LINERLESS™

Linerless Media

- B-linerless™ has two different types of adhesive strengths including B-linerless Permanent and B-linerless Restick
- Enhancing employees productivity by eliminating peel-off time and disposal of backing liner
- Cutting storage and transportation expenses
- Up to 40% more length per roll than traditional liner labels



B-RIBBON™

Ribbons for Thermal Transfer Label Printer

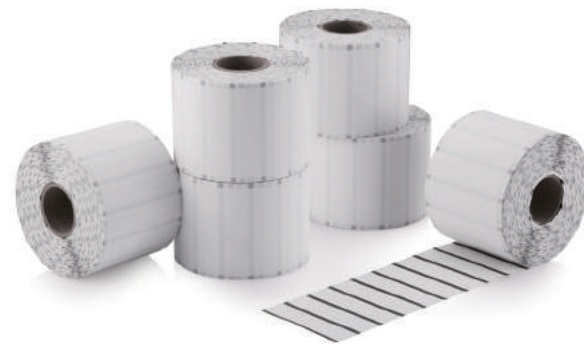
- Wax, Wax/Resin and Resin ribbon options
- Quality guaranteed in harsh chemicals, extreme temperatures or outdoors
- Ensuring print quality and durability



B-POST LABEL™

Patented 3-inch Special Label

- Designed adhesive-free black mark on reverse side
- Printing diverse label such as electronic stamps, invoice and shipping labels
- Available to print various length labels
- Enhancing productivity by eliminating the need to switch multiple length label rolls
- Cutting down purchasing and storage cost of media



LABEL PRINTERS



	XT Series	RFID XT5-40NR	XL5-40	XD Series
Postal / Courier				
Receiving / Shipping		•	•	•
Proof of Delivery				
Point of Sales				
Public Safety / Utilities				
e-Citation				
Parking Management				
Document & Records Management				•
Asset & Facility Management	•			
Meter Reading				
National and Regional Administration				
Asset & Facility Management				
Document & Records Management				•
e-Voting				
Education				
Asset & Facility Management	•			
Document & Records Management				

MOBILE PRINTERS



	XM7-40 / SPP-L410	SPP-L3000 / SPP-L310
Postal / Courier		
Receiving / Shipping	•	•
Proof of Delivery	•	•
Point of Sales		
Public Safety / Utilities		
e-Citation	•	•
Parking Management		•
Document & Records Management		•
Asset & Facility Management		•
Meter Reading		•
National and Regional Admin		
Asset & Facility Management	•	•
Document & Records Management		•
e-Voting		
Education		
Asset & Facility Management		•
Document & Records Management		

LABEL PRINTERS



	RFID XD5-40TR / SLP-TX400	SLP-TX420 / SLP-TX400 / SLP-DX420	SLP-TX220 / SLP-DX220	SLP-DL410
Postal / Courier				
Receiving / Shipping	•	•		
Proof of Delivery				
Point of Sales				
Public Safety / Utilities				
e-Citation				
Parking Management				
Document & Records Management	•			•
Asset & Facility Management	•			
Meter Reading				
National and Regional Administration				
Asset & Facility Management	•			
Document & Records Management		•		•
e-Voting				
Education				
Asset & Facility Management	•			
Document & Records Management			•	

MOBILE PRINTERS



	SPP-R410	SPP-R310	SPP-R200III / SPP-R210
Postal / Courier			
Receiving / Shipping			
Proof of Delivery	•	•	•
Point of Sales			•
Public Safety / Utilities			
e-Citation	•	•	•
Parking Management	•	•	•
Document & Records Management			
Asset & Facility Management			
Meter Reading	•	•	
National and Regional Admin			
Asset & Facility Management			
Document & Records Management			
e-Voting	•	•	•
Education			
Asset & Facility Management			
Document & Records Management			

POS PRINTERS



SRP-380 / SRP-350plusIII / SRP-350III / SRP-330II



SRP-Q300 Series

Postal / Courier	
Receiving / Shipping	
Proof of Delivery	
Point of Sales	•
Public Safety / Utilities	
e-Citation	
Parking Management	
Document & Records Management	
Asset & Facility Management	
Meter Reading	
National and Regional Administration	
Asset & Facility Management	
Document & Records Management	
e-Voting	•
Education	
Asset & Facility Management	
Document & Records Management	•

SUPPLIES



B-LINERLESS™



B-RIBBON™



B-POST LABEL™

	•	
	•	
		•
	•	
		•
		•
		•
		•
		•
		•

GOVERNMENT SOLUTION



BIXOLON

BIXOLON Co.,Ltd.
+82 31 218 5500
sales@bixolon.com

BIXOLON America Inc.
+1 858 764 4580
sales@bixolonusa.com

BIXOLON Europe GmbH
+49 211 68 78 54 0
sales@bixolon.de

BIXOLON MEA
+971 50 974 9698
russell@bixolon.com