


Rugged mobile receipt & label printer range

**RJ Series
mobile printers**

www.brother.eu

RJ Series

A woman wearing a red baseball cap and a red and white vertically striped apron over a light pink shirt. She has a name tag that says "Maria". She is holding a black handheld device in her right hand and a small black Brother label printer in her left hand, which is printing a white label. The background is a blurred indoor setting, possibly a warehouse or store.

**Empower
workers to
create and
amend labels
at any location**

Brother provide a comprehensive range of RJ mobile printers. They feature impressive print speeds and a rugged build quality to fit the requirements of a wide range of vertical market applications. Bluetooth, Wireless & USB connectivity options make it possible for busy mobile workers to print on site or in the field.



RJ Series mobile printers



Rugged design

Due to the nature of many mobile applications, printers may be exposed to a range of outdoor conditions which can affect the print operation or cause damage, e.g. a traffic warden printing in the field. However, all RJ printers are tested against IP54 protection standards, offering that extra peace of mind for such outdoor applications subject to damp / moisture or indoor environments where dust is present. In addition, the RJ range is drop tested up to 2.5 metres to provide extra credibility in terms of toughness and reliability.



RJ Series

Up to 2 inch



RJ-2035B

RJ-2055WB

RJ-2030

RJ-2050

RJ-2140

RJ-2150

Up to 3 inch



RJ-3035B

RJ-3055WB

RJ-3050

RJ-3150

Up to 4 inch



RJ-4230B

RJ-4250WB

Trust RJ Series mobile printers to take on every application

Retail

Increase efficiency for retailers with lightweight, durable and easy to use mobile printers. This provides staff with a simple and accurate labelling and receipt solution, perfect for pricing, promotions and queue-busting to increase customer satisfaction.



Applications include:

- Shelf edge labels
- 'Queue busting' receipt printing
- Mark down or discount labels
- Price labels
- Food traceability labelling
- Click and collect labels



Direct Store Deliveries

Delivery drivers need to be equipped with a seamless solution to help streamline their workflow and minimise downtime. Mobility and integration is key, so drivers have access to systems providing pricing, invoicing, inventory control, and customer information. This makes it easier to produce invoices on-site.



Applications include:

- Sales orders and confirmations
- Returned goods receipts and labels
- Customer receipts
- Delivery receipts



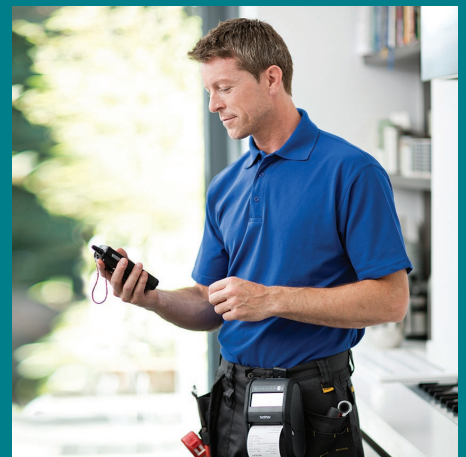
Field Service

Whether you need receipts or smaller format labels, without a mobile print solution, handwritten documents are time consuming and prone to error. That's why most businesses are empowering their workforce with mobile technology, meaning they complete tasks on the move, professionally and on schedule.



Applications include:

- Receipts and invoices
- Repair estimates
- Statements of work
- Work orders
- Estimates and quotations
- Maintenance and service reports



RJ Series

Public Safety

Increase operational efficiency by allowing law enforcement officers and emergency staff to document and report incidents more accurately and efficiently, at the point of interaction. With their durable design, fast print speed & reliable operation, the range offers a competitive combination of performance and features.



Applications include:

- Parking violations
- Recording of accidents and crime scenes
- Electronic citations and fines
- Warning Notices



Warehousing

Efficient warehousing operations and worker productivity are critical to the success of many companies. Using wireless connectivity, the Brother RJ mobile printer range provides workers with the ability to print barcode labels on-demand, at the point of application. This saves time and reduces potential errors caused by mislabelling.



Applications include:

- Work-in-progress labels
- Bin and shelf labels
- Shipping and despatch labels
- Inventory pick and return tickets



RJ series range brief summary

RJ-2035B	RJ-2055WB	RJ-2030	RJ-2050	RJ-2140	RJ-2150
2 Inch					

Printing

Print technology	Direct thermal		
Print speed	101.6mm/sec	152mm/sec	
Resolution	203dpi		
Max print width	48mm (receipt)	54mm (receipt)	54mm (receipt) 51mm (label)

Media Types

Receipt	●	●	●	●	●	●
Labels					●	●

Connectivity

USB	●	●	●	●	●	●
Wireless LAN		●		●	●	●
Bluetooth	●	●	●	●		●
AirPrint				●	●	●
MFi	●			●		●

General

IP rating	IP42 (IP54 with optional case)	IP54	
Drop protection (metres)	1.8 (2.5 with optional case)	2.5	
Weight (with battery)	215g	465g	545g
Dimensions (mm)	79(w) 36.5(h) 116(d)	122(w) 57(h) 100(d)	151(w) 73(h) 100(d)
Operating system support	Microsoft® Windows® 7 Windows® 8.1 Windows® 10 Windows® Server 2012, 2012 R2, 2016, 2019 Linux Mac OS v10.11-10.15	Microsoft® Windows® 7 Windows® 8 Windows® 8.1 Windows® 10	
Mobile OS	Android / iOS	Android	Android / iOS
Supported commands	FBPL-EZC (EPL2/ZPL2/CPCL) FBPL-EZP (EPL2/ZPL2/ESC-POS) - download	P-touch Template, ESC/P, Raster, ZPL II emulation, CPCL emulation	

RJ series range brief summary

	RJ-3035B	RJ-3055WB	RJ-3050	RJ-3150	RJ-4230B	RJ-4250WB
	3 Inch				4 Inch	

Printing

Print technology	Direct thermal		Direct thermal
Print speed	101.6mm/sec	127mm/sec	127mm/sec
Resolution	203dpi		203dpi
Max print width	72mm		104mm

Media Types						
Receipt	●	●	●	●	●	●
Labels		●		●	●	●

Connectivity						
USB	●	●	●	●	●	●
Wireless LAN		●	●	●		●
Bluetooth	●	●	●	●	●	●
AirPrint			●	●		●
MFi	●				●	●

General

IP rating	IP42 (IP54 with optional case)		IP54		IP54
Drop protection (metres)	1.8 (2.5 with optional case)		1.2	1.8	2.1
Weight (with battery)	375g	375g	610g	680g	850g
Dimensions (mm)	105(w) 49.5(h) 116(d)	105(w) 49.5(h) 116(d)	113(w) 80(h) 186(d)	116(w) 82(h) 189(d)	153(w) 159(h) 68(d)
Operating system support	Microsoft® Windows® 7 Windows® 8.1 Windows® 10 Windows® Server 2012, 2012 R2, 2016, 2019 Linux Mac OS v10.11-10.15		Microsoft® Windows® Vista Windows® 7 Windows® 8 Windows® 8.1 Windows® 10 Windows® Server 2008, 2008 R2, 2012, 2012 R2		Microsoft® Windows® 7 Windows® 8 Windows® 8.1 Windows® 10 RJ-4250WB also supports: Microsoft® Windows Server® 2008 2008 R2 / 2012 / 2012 R2 / 2016
Mobile OS	Android / iOS				Android / iOS
Supported commands	FBPL-EZC (EPL2/ZPL2/CPCL) FBPL-EZP (EPL2/ZPL2/ESC-POS) - downloadable		P-touch Template, ESC/P, Raster, ZPL II emulation, CPCL emulation		P-touch Template, ESC/P, Raster, ZPL II emulation, CPCL emulation



Customise your
RJ printer with
the great range
of accessories

Accessories and print supplies

Brother has designed and engineered a wide range of accessories to help customise the solution, whatever your requirement. Brother accessories help workers to equip their device in-vehicle and on-body. Power options also help with increased battery demands.

Power Options

PA-BT-003 Li-ion rechargeable Battery RJ-2030 RJ-2050 RJ-2140 RJ-2150 	PA-BT-001A PA-BT-001B Li-ion rechargeable Battery RJ-3150 RJ-3050 A B 	PA-BT-006 Rechargeable Li-ion smart Battery RJ-4230B RJ-4250WB 	PA-BT-008 Li-ion rechargeable battery (Standard) RJ-2035B RJ-2055WB 	PA-BT-009 Li-ion rechargeable battery (Standard) RJ-3035B RJ-3055WB 	PA-BT-010 Li-ion rechargeable battery (Smart) RJ-3035B RJ-3055WB 	PA-AD-600AUK AC Adapter (UK) RJ-2030 RJ-2050 RJ-2140 RJ-2150 RJ-3050 RJ-3150 RJ-4230B RJ-4250WB 
PA-AD-600AEU AC Adapter (EU) RJ-2030 RJ-2050 RJ-2140 RJ-2150 RJ-3050 RJ-3150 RJ-4230B RJ-4250WB 	PA-CD-600CG Car Adaptor (cigarette) RJ-2030 RJ-2050 RJ-2140 RJ-2150 RJ-3050 RJ-3150 RJ-4230B RJ-4250WB 	PA-CD-600WR Car Adapter (wired) RJ-2030 RJ-2050 RJ-2140 RJ-2150 RJ-3050 RJ-3150 RJ-4230B RJ-4250WB 	PA-BEK-001WR Battery Eliminator Kit Wired Type RJ-4230B RJ-4250WB 	PA-BEK-001CG Battery Eliminator Kit Cigarette Socket Type RJ-4230B RJ-4250WB 	PA-CD-001CG 12-24V DC automobile cigarette lighter RJ-2035B RJ-3035B RJ-2055WB RJ-3055WB  <div>Coming soon</div>	



Accessories

PA-BC-002

Battery Charging Unit (single)

RJ-2030 | RJ-2050
RJ-2140 | RJ-2150



PA-BC-001

Battery Charging Unit (single)

RJ-3050 | RJ-3150



PA-BC-003

Battery Charging Unit (single)

RJ-4230B |
RJ-4250WB



PA-CR-001

Charging Cradle

RJ-3050 | RJ-3150



PA-CR-002A

Car Mount/
Charging Cradle

RJ-4230B |
RJ-4250WB



PA-SS-4000

Shoulder Strap

RJ-2030 | RJ-2050
RJ-2140 | RJ-2150
RJ-3050 | RJ-3150
RJ-4230B | RJ-4250WB



PA-CC-002

IP54 protective case
with shoulder strap

RJ-2035B
RJ-2055WB



PA-CC-003

IP54 protective case
with shoulder strap

RJ-3035B
RJ-3055WB



PA-BC-005 (EU) PA-BC-005 (UK)

1-slot battery
charger

RJ-3035B
RJ-3055WB



PA-4BC-001 (EU) PA-4BC-001 (UK)

4-slot battery
charger

RJ-2035B
RJ-2055WB



PA-4BC-002 (EU) PA-4BC-002 (UK)

4-slot battery
charger

RJ-3035B
RJ-3055WB



PA-CR-003

1-slot docking
cradle

RJ-2035B
RJ-2055WB



Coming soon

PA-CR-004

1-slot docking
cradle

RJ-3035B
RJ-3055WB



Coming soon

PA-4CR-001

4-slot docking
cradle

RJ-2035B
RJ-2055WB



Coming soon

PA-4CR-002

4-slot docking
cradle

RJ-3035B
RJ-3055WB



Coming soon

PA-LPR-001

Linerless Platen
Roller

RJ-4230B
RJ-4250WB



PA-LPR-002*

Linerless kit

RJ-2035B
RJ-2055WB



PA-LPR-003*

Linerless kit

RJ-3035B
RJ-3055WB



PA-SS-001

Shoulder strap with
adaptor

RJ-2035B
RJ-2055WB
RJ-3035B
RJ-3055WB



PA-RS-001

Roll spacer

RJ-2035B
RJ-2055WB



PA-RS-002

Roll spacer

RJ-3035B
RJ-3055WB



PA-RH-002

Roll holder

RJ-3035B
RJ-3055WB



* Dealer installation only

Media Options

RD-R03E5

Continuous Receipt Roll

RJ-2030 | RJ-2050 |
RJ-2140 | RJ-2150 |
4200 Series

Roll Size:
58mm x 12m
Colour: white



RD-Q04E1

Die-cut Labels Roll

RJ-2140 | 2150

Label Size:
51mm x 26mm
Colour: white
Quantity: 450 per roll



RD-P08E5

Continuous Receipt Roll

RJ-3050 | RJ-3150

Roll size:
76mm x 35m
Colour: white

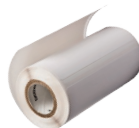


RD-P09E1

Die Cut Labels Roll

RJ-3150

Label size:
76mm x 44mm
Colour: white
Quantity: 335 per roll



RD-M01E5

Continuous Receipt Roll

RJ-4200 Series

Roll Size:
102mm x 27.5m
Colour: white



RD-M03E1

Die Cut Labels Roll

RJ-4200 Series

Label Size:
102mm x 152mm
Colour: white
Quantity: 70 per roll



BDE-1J000057-030

Continuous Receipt Roll

RJ-2035B | RJ-2055WB

Roll Size:
57mm x 6.6m
Colour: white



BDE-1J000079-040

Continuous Receipt Roll

RJ-3035B | RJ-3055WB

Roll Size:
79mm x 14m
Colour: white



BDE-1J044076-040

Die Cut Labels Roll

RJ-3055WB

Label size:
76mm x 44mm
Colour: white
Quantity: 70 per roll



Brother provides all the necessary tools required for software developers to integrate printing into their mobile applications. Printer drivers are available for Windows OS, and Software Development Kits can be provided to support Windows Mobile*, Android and iOS operating systems.

Software Support Features

Template mode

Design the required document on your Windows PC, including logos and barcodes. Once transferred and stored in the printer's memory, the template can be recalled and any data replaced, before printing with just a few short commands.

AirPrint* and MFi* support

Easily connect to, and print from Apple devices thanks to AirPrint and MFi support.



*Check model compatibility



Mobile Deploy*

Cloud-based app for mobile devices (iOS and Android™), which allows IT administrators to remotely update and configure multiple Brother mobile printers. Using Mobile Deploy, the administrator can easily upload new update packages to an online location, and then share the URLs with the users.

Printer Commands*

With support for ZPL II emulation, CPCL emulation in addition to ESC-POS commands, developers can easily integrate mobile printing into existing legacy systems.

<https://www.brother.co.jp/eng/dev/>



* Check model compatibility

Helping keep
your workforce
agile when
printing on
the move



RJ series range

2 inch

RJ-2035B	RJ-2055WB	RJ-2030	RJ-2050	RJ-2140	RJ-2150
2 Inch					

Printing / Media

Print technology	Direct thermal		
Print resolution	203dpi		
Print speed	Maximum 4ips (101.6mm/sec)	Maximum 6ips (152mm/sec)*	
Maximum print width on receipt	48mm	54mm	
Maximum print length	2794mm	1000mm	
Media sensor type	Reflective		Transmissive / Reflective
Cutter type	Tear bar		
Media types	Receipt	Receipt, label**	Receipt, label, tag label
Receipt width	58mm max		
Receipt paper thickness	2.3-3.5 mils (0.058-0.090mm)		
Label width	-		55mm
Label thickness	-		3.1-6.7 mils (0.080-0.170mm)
Roll diameter	30mm max	40mm max	50mm max
Core diameter	-	10.2mm	

LCD

Type	-	Backlit monochrome LCD
------	---	------------------------

Connectivity

USB	USB v2.0 (Micro-USB connector)		USB v2.0 full-speed (mini-B connector)			
Bluetooth	v5.0	v4.2	v2.1+EDR			
Bluetooth profiles	SPP (Serial Port Profile), GATT (Low Energy) / iAP supported	SPP (Serial Port Profile) GATT (Low Energy)	SPP (Serial Port Profile) OPP (Object Push Profile) BIP (Basic Imaging Profile) HCRP (Hard Copy Cable Replacement Profile)	SPP (Serial Port Profile) OPP (Object Push Profile) BIP (Basic Imaging Profile) HCRP (Hard Copy Cable Replacement Profile) iAP supported		
MFfi support	Yes	-	-	Yes	-	Yes
Wireless LAN	-	Wireless LAN IEEE802.11a/b/g/n	-	IEEE802.11b/g/n Infrastructure mode: [b/g/n] Adhoc mode: [b/g/n] Wireless direct mode: [g/n]		
Wireless LAN security (AdHoc mode)	-	-	-	None / WEP		
Wireless LAN security (Infrastructure mode)	-	Open system (None/WEP64/WEP128) Common key authentication (WEP) WPA/WPA2-PSK (TKIP+AES) EAP-FAST (TKIP/AES) PEAP (TKIP/AES) *3 EAP-TLS (TKIP/AES) EAP-TTLS (TKIP/AES) Authentic method (encryption scheme)	-	None/WEP64/WEP128 Common key authentication (WEP) WPA/WPA2-PSK (TKIP+AES) LEAP (CKIP) EAP-FAST (TKIP/AES) PEAP (TKIP/AES) *3 EAP-TLS (TKIP/AES) EAP-TTLS (TKIP/AES)		
Wireless LAN security (Wireless direct mode)	-	-	-	None / WPA2-PSK (AES) / WEP		
NFC	Yes	Yes	-	-		

* Under Brother standard environment

** With black mark only

RJ-2035B	RJ-2055WB	RJ-2030	RJ-2050	RJ-2140	RJ-2150
2 Inch					

Software / Firmware

Operating system support	Microsoft® Windows® 7 Windows® 8.1 Windows® 10, Windows® 2012, 2012 R2, 2016, 2019 Linux Mac OS v10.11-10.15	Microsoft® Windows Vista®/ Windows® 7 / Windows® 8 Windows® 8.1 / Windows® 10, Android 4.0.3 or higher (SDK) iOS 6 or higher (SDK)
SDK availability (visit https://www.brother.co.jp/eng/dev/)	Android v5 – v10 iOS v9 – v13.2	b-PAC (for Windows) Android 4.0.3 or higher (SDK) iOS 6 or higher (SDK)
Supported printer commands	FBPL-EZC (EPL2/ZPL2/CPCL) FBPL-EZP (EPL2/ZPL2/ESC-POS) - downloadable	ZPLII emulation, CPCL emulation ESC/P, P-touch Template, Raster
Barcode symbologies	Linear: Code128UCC, Code128 subsets A, B, C, EAN128, Interleaved 2 of 5, Interleaved 2 of 5 with check digit, Standard 2 of 5, Industrial 2 of 5, Code39, Code39 with check digit, Code93, EAN13, EAN8, UPCA, UPCE, EAN and UPC 2 (5) digits add-on, Codabar, Postnet, MSI, MSI with check digit, PLESSEY, China post, ITF14, EAN14, Code11, TELEPEN, TELEPEN number, PLANET, Code49, Deutsche Post Identcode, Deutsche Post Leitcode, LOGMARS 2-dimensional: CODABLOCK F mode, GS1 DataBar, GS1 DataMatrix, Maxicode, AZTEC, PDF417, QR Code, Micro PDF417, TLC39	CODE39 / ITF (I-2/5) / EAN-13 / EAN-8 / UPC-A / UPC-E / CODABAR / CODE128 / GS1-128(UCC/EAN-128) / RSS symbols / CODE93 / POSTNET / UPC/EAN EXTENSION / MSI / QR Code (model 1, model 2, micro QR) / PDF417 (Standard, Truncate, MicroPDF417) / Data Matrix (ECC200 Square, ECC200 Rectangular) / MaxiCode / Aztec

Memory

RAM	32MB	
Flash	16MB	32MB (12MB available for template upload)

Environmental

Drop protection	2.5m (with IP54 optional case)	2.5m
Sealing	IP54 (with optional case)	IP54
Operating temperature	-15C to +50C	Operating: -10C to +50C / Charging: 0C to +40C
Operating humidity	10%-90% / Maximum wet bulb: +27C (no condensation)	
Storage temperature	-30C to +70C	-20C to +60C for 120 hours maximum
Storage humidity	10% to 90% non-condensing	+45C @ 95% for 120 hours maximum

Power

Battery	Rechargeable Li-ion	
AC adapter	AC adapter (15 V) only for charging (50/60Hz)	100-240V AC (50/60Hz) to 15V DC (only for charging) (optional)
Car adapter (optional accessory)	12V DC (only for charging)	

Weights / Dimensions

Dimensions (mm)	79(w) x 36.5(h) x 116(d)	122(w) x 57(h) x 100(d)	151(w) x 73(h) x 100(d)
Weight (including battery)	215g	465g	545g

Included items

Supplied in box	Belt clip, documentation, power adaptor, battery	Battery, belt clip, documentation
-----------------	---	-----------------------------------

RJ series range

3 & 4 inch

RJ-3035B	RJ-3055WB	RJ-3050	RJ-3150	RJ-4230B	RJ-4250WB
3 Inch				4 Inch	

Printing / Media

Print technology	Direct thermal				Direct thermal
Print resolution	203dpi				203dpi
Print speed	Maximum 4ips (101.6mm/sec)		Maximum 127mm/second (5ips)		Maximum 127mm/second (5ips)
Maximum print width on receipt	72mm				104mm
Maximum print length	2794mm		1000mm		3000mm
Media sensor type	Reflective	Transmissive / Reflective			Transmissive / Reflective
Cutter type	Tear bar				Double tear bar
Media types	Receipt	Receipt / label	Receipt / label*	Receipt/label/tag	Receipt / label / Tag label
Receipt width	80mm				113mm
Receipt paper thickness	2.3-3.5 mils (0.058-0.090mm)				2.2 mil to 3.5 mil (0.058mm to 0.090mm)
Label width	-			76mm	113mm
Label thickness	-			3.2-6.7 mils (0.080-0.170mm)	3.1 mil to 6.6 mil (0.080mm to 0.170mm)
Roll diameter	40mm max		66mm max		58mm max
Core diameter	-		10.2mm (receipt)	10.2mm (receipt) / 25.4mm (labels)	12.7mm (receipt) / 25.4mm (labels)

LCD

Type	-	Colour	Mono
------	---	--------	------

Connectivity

USB	Yes				Yes
USB host capability	-			Type A connector	-
Bluetooth	v5.0	v4.2	v2.1+EDR		v4.2 (supporting low energy)
Bluetooth profiles	SPP (Serial Port Profile), GATT (Low Energy)/ iAP supported	SPP (Serial Port Profile) GATT (Low Energy)	SPP (Serial Port Profile) OPP (Object Push Profile)		Classic: SPP (Serial Port Profile) / OPP (Object Push Profile) / HCRP (Hard Copy Cable Replacement Profile) / iAP supported / Low Energy: GATT
MFi support	Yes	No	Yes	No	Yes
Wireless LAN	-	Wireless LAN IEEE802.11a/b/g/n	IEEE802.11b/g/n Infrastructure mode / Wireless direct mode: [b/g/n] Adhoc mode: [b] Wireless direct mode: [b/g/n]		- Wireless LAN IEEE802.11 [a/b/g/n] (Infrastructure mode: [a/b/g/n] / Wireless direct mode: [g/n])
Wireless LAN security (AdHoc mode)	-	-	-	Authentic method (encryption scheme)	-
Wireless LAN security (Infrastructure mode)	-	Authentic method (encryption scheme) Infrastructure mode: Open system (None/ WEP64/WEP128) WPA/WPA2-PSK (TKIP+AES) EAP-FAST (TKIP/AES) PEAPv0 (TKIP/AES) EAP-TLS (TKIP/AES) EAP-TTLS (TKIP/AES)	-	Open system (None/ WEP64/WEP128 Common key authentication (WEP) WPA/WPA2-PSK (TKIP+AES) EAP-FAST (TKIP/AES) PEAP (TKIP/AES) *3 EAP-TLS (TKIP/AES) EAP-TTLS (TKIP/AES) Authentic method (encryption scheme)	- Open system (None/ WEP64/WEP128) Common key authentication (WEP) WPA/WPA2-PSK (TKIP+AES) EAP-FAST (TKIP/AES) PEAP (TKIP/AES) *3 EAP-TLS (TKIP/AES) EAP-TTLS (TKIP/AES)
Wireless LAN security (Wireless direct mode)	-	-	WPA2-PSK (AES)		- WPA2-PSK (AES)
NFC	Yes	Yes	-	-	Yes (Passive only)

* Black mark only

RJ-3035B	RJ-3055WB	RJ-3050	RJ-3150	RJ-4230B	RJ-4250WB
3 Inch				4 Inch	

Software / Firmware					
Operating system support					
Visit: http://support.brother.com for latest OS support					
SDK availability (visit https://www.brother.co.jp/eng/dev/)	Microsoft® Windows® 7 Windows® 8.1 Windows® 10 Windows® Server 2012, 2012 R2, 2016, 2019 Linux Mac OS v10.11-10.15		Microsoft® Windows® 7 Windows® 8 Windows® 8.1 Windows® 10 Windows® Server 2008, 2008 R2, 2012, 2012 R2, 2016, 2019 Linux Mac OS v10.6-10.15		Microsoft® Windows Vista® / Windows®7 Windows®8 Windows®8.1 / Windows®10 / Microsoft® Windows Server® 2003 / 2008 / 2008 R2 / 2012 / 2012 R2
	Android v5 – v10 iOS v9 – v13.2		Android 2.3 or later iOS 5 or later	Android 4.0.3 / iOS 7 or later	Android 4.0.3 or later iOS 7 or later
Supported printer commands	FBPL-EZC (EPL2/ZPL2/CPCL) FBPL-EZP (EPL2/ZPL2/ESC-POS) - downloadable		ZPLII emulation / CPCL emulation / ESC/P / P-touch Template / Raster		As 3 inch spec
Barcode symbologies	Linear: Code128UCC, Code128 subsets A, B, C, EAN128, Interleaved 2 of 5, Interleaved 2 of 5 with check digit, Standard 2 of 5, Industrial 2 of 5, Code39, Code39 with check digit, Code93, EAN13, EAN8, UPCA, UPCE, EAN and UPC 2 (5) digits add-on, Codabar, Postnet, MSI, MSI with check digit, PLESSEY, China post, ITF14, EAN14, Code11, TELEPEN, TELEPEN number, PLANET, Code49, Deutsche Post Identcode, Deutsche Post Leitcode, LOGMARS, 2-dimensional: CODABLOCK F mode, GS1 DataBar, GS1 DataMatrix, Maxicode, AZTEC, PDF417, QR Code, Micro PDF417, TLC39		Using ESC/P with P-touch Template CODE39, ITF(I-2/5), EAN-13 (JAN13), EAN-8(JAN8), UPC-A, UPC-E, CODABAR (NW-7), CODE128, GS1-128 (UCC/EAN-128), QR Code (model 1, model 2, micro QR), PDF417 (Standard, Truncate, MicroPDF417), DataMatrix (ECC200 Square, ECC200 Rectangular), MaxiCode, GS1 DataBar (Standard, Truncated, Stacked, Stacked Omnidirectional), GS1 DataBar Limited, GS1 DataBar Expanded (Standard, Stacked) Using only ESC/P UPC/EAN EXTENSION, CODE93, POSTNET		Linear: CODE 39, ITF(I-2/5), EAN-8, EAN-13, UPC-A, UPC-E, UPC/EAN EXTENSION CODABAR, CODE 128, GS1-128 (UCC/EAN 128), POSTNET, GS1 Databar (Omnidirectional / Truncated / Stacked / Stacked Omnidirectional / Limited / Expanded / Expanded Stacked) CODE93, MSI/Plessey Intelligent Mail Barcode 2-dimensional: QR Code (model 1, model 2, micro QR), Maxi code, PDF417 (Standard, Truncate) MicroPDF417, Data Matrix (Square, Rectangular) AztecCode

Memory					
RAM	32MB				256MB
Flash	16MB		32MB		64MB

Environmental				
Drop protection	2.5 metres (with optional IP54 case)	1.2 metres	1.8 metres	2.1 metres
Sealing	IP54 (with optional case)	IP54		IP54
Operating temperature	-15 to 50°C	Operating: -10C to +50C / Charging: 0C to +40C		Battery: -20°C to 55°C AC adapter: -10°C to 40°C. Car adapter: -10°C to 50°C
Operating humidity	10-90%, Max wet bulb: 27 deg C (No condensation)			10-90%, Max wet bulb: 27 deg C (No condensation)
Storage temperature	-30C to +70 deg C			-20C to +60 deg C
Storage humidity	10% to 90% non-condensing	10% - 90%, Max wet bulb: 45 deg C (No condensation)		10% - 90%, Max wet bulb: 45 deg C (No condensation)

Power			
Battery	Rechargeable Li-ion		Rechargeable Li-ion smart battery (optional)
AC adapter	AC adapter (15 V) only for charging (50/60Hz)	AC adapter (15 V) only for charging (50/60Hz) (optional)	AC adapter (15 V) only for charging (50/60Hz) (optional)
Car adapter (optional accessory)	Cigarette car adapter or Wired type (12 V (DC)) only for charging		

Weights / Dimensions					
Dimensions (mm)	105 (W) x 49.5 (H) x 116 (D) mm		113(w) x 80(h) x 186(d)	116(w) x 82(h) x 189(d)	153(w) x 68(h) x 159(d) mm
Weight (including battery)	375g	375g	610g	680g	850g

Included items					
Supplied in box	Belt clip Documentation Power adaptor Battery		Printer Li-ion battery (PA-BT-001-B) Belt clip	Printer Li-ion battery (PA-BT-001-A) Button type battery Belt clip	Printer Belt clip Adjuster guide lockers

brother

at your side

Contact:

www.brother.eu

Brother International Europe Ltd

Brother House, 1 Tame Street, Audenshaw,
Manchester M34 5JE

Tel: +44(0)161 330 6531

Fax: +44(0)161 330 5520

All specifications correct at the time of printing and are subject to change. Brother is a registered trademark of Brother Industries Ltd.
Brand product names are registered trademarks or trademarks of their respective companies.