

ColorWorks C7500 series

Driving efficiencies with Enterprise Labelling



Improve efficiencies across the supply chain

Discover how ColorWorks C7500 series can become an important part of your operations.

Supply chains are becoming increasingly global to better connect with both customers and suppliers. In order to keep these large and complex supply chains connected, labels play a key role.

To keep things running smoothly, you need a label solution which is easy to implement and use, and offers flexibility where necessary.

Current challenges



Labels are pre-printed, which is expensive and takes up a huge amount of space

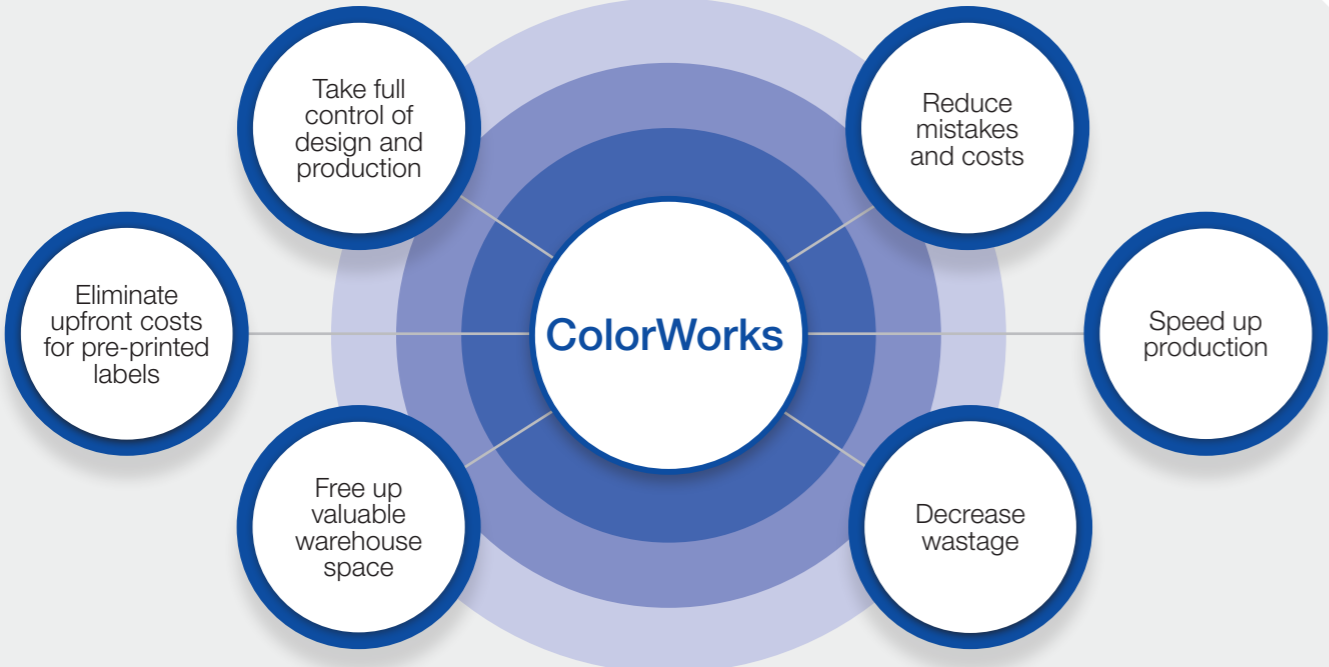


Manual process of selecting box labels often leads to costly mistakes

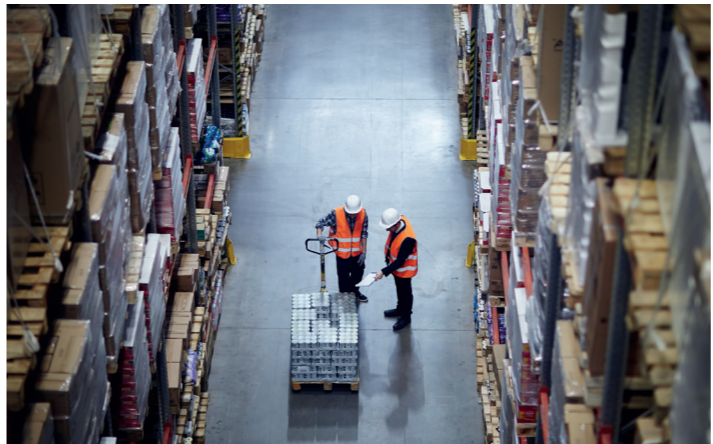


Inflexible, slow label operations hinder productivity and delivery times

Our solution - on-demand colour label printing



Flexibility across industries



Logistics

- Improve traceability by colour coding warehouse products
- Reduce errors and delays
- Save costs by reducing waste
- Improve efficiency and productivity

Manufacturing

- Automate your labelling process
- Reduce the need for multiple box labels to just one, which includes all the information
- Print from a centrally-controlled ERP to reduce errors
- Achieve just-in-time production



Chemicals

- Ensure GHS compliance
- Avoid paying penalties and having products removed from shelves
- End production delays due to label stock shortage
- Change designs on the go and print as required

ColorWorks C7500 series specifications

Technology	Printing method	Line printer (PrecisionCore MicroTFP)
	Colours	Magenta, Yellow, Cyan, Black
	Ink technology	DURABrite™ Ultra (C7500) and UltraChrome™ (C7500G)
Print	Printing speed	Max. 300mm/sec at 600 × 1,200dpi (printing width 108mm)
	Printing resolution	Max. 600 × 1,200dpi
	Printing width	Max. 108mm
Media	Formats	Roll (8in external diameter), Fanfold paper
	Width	Min 50mm, Max 112mm
	Type	Die-cut label, Black mark paper, Black mark label, continuous label, continuous paper
General	Interfaces	USB 2.0 Type B, Ethernet interface (100 Base-TX / 10 Base-T)
	Autocutter	Included
	Supply voltage	100 ~ 240 V, 50 ~ 60 Hz
	Power consumption	Standby: Appx. 4W, Printing: Appx. 86W
	Temperature / humidity	Storage: -20~60 °C (5~85 % RH) Printing: 5~35 °C (20~80 % RH)
	Product dimensions	392 × 598 × 395mm (Width × Depth × Height)
	Product weight	37kg
Software	Printer drivers	Windows®
	Command set	ESC/Label

To find out more visit www.epson.eu/C7500

For further information please contact your local Epson office or visit www.epson-europe.com

Algeria (+2213) 770 938 617 **Austria** 01 253 49 78 333 **Belgium** +32 (0)2 792 04 47 **Czech** 800/142 052 **Denmark** 44 50 85 85 **East Africa** (+254) 734 354 075
Finland 0201 552 091 **France** 09 74 75 04 04 (Cost of local call, operator charges may apply) **Germany** +49 (0) 2159/92 79 500 **Greece** (0030) 211 198 62 12
Hungary 06800 147 83 **Ireland** 01 436 7742 **Israel** (+972)-3-5751833 **Italy** 02-660321 10 (0,12 €/min) **Luxembourg** +352 27860692 **Middle East** +9714 2677638
Morocco (+212) 661 31 11 18 **Netherlands** +31 (0)20 708 5099 **Norway** +47 67 11 37 00 **Poland** 0-0-800 4911299 (0,16 zł/min) **Portugal** 707 222 111
Romania 0040 214025024 **Russia** (095) 777-03-55 **Slovakia** 0850 111 429 **Southern Africa** (+2711) 465-9621 **Spain** 93 582 15 00 **Sweden** 0771-400135
(Mobilsamtal – 0,99 kr/min, Lokala samtal – 0,30 kr/min, Utlandssamtal – 0,89 kr/min) **Switzerland** 022 592 7923 **Tunisia** (+216) 9833 3571 **Turkey** (0212) 3360303
United Kingdom 0871 42 37766 (+10p per minute plus network extras) **West Africa** (+234)8020727843

Trademarks and registered trademarks are the property of Seiko Epson Corporation or their respective owners.
Product information is subject to change without prior notice.

EPSON®