

**Zebra  
VisibilityIQ™**  
Powered by Zebra Savanna™

**Where Device Visibility  
and Action Connect**





## Stop Guessing the Status of Your Devices. Start Improving Operations.

If your device data isn't helping you perform at your peak, it's hurting your business. You're caught off-guard by device downtime and battery failures and more. Your time and money are squandered on manual tracking and excessive inventory and repairs. And you're in the dark about security risks, not knowing which of your devices are lost or stolen.

---

**Only device data that's clear and comprehensive can help you avoid disruption and disorder. Look to Zebra for such clarity in device data.**

---

With Zebra's VisibilityIQ, you have the data-driven, actionable insight business intelligence tool to get the most from your devices, workers and tasks. Choose the type of visibility to better run your business, whether it's customer-hosted or cloud-based. All VisibilityIQ Foresight solutions offer near real-time business intelligence when and how you need it. Now, you'll see how your devices are performing and know what next steps can push up productivity and drive down costs.

### **VisibilityIQ™ Foresight:**

Business intelligence tool that goes beyond an EMM, providing insight into full operational aspects of your devices from a single cloud-based view.

### **VisibilityIQ™ OneCare™:**

Included with our Zebra OneCare™ maintenance plans\*, see cloud-based reports that focus on uptime, savings and security.

Visit [www.zebra.com/VisibilityIQ](http://www.zebra.com/VisibilityIQ)



# Zebra **VisibilityIQ™** Foresight

Powered by Zebra Savanna™

## Replace Reactive with Proactive.

**Managing hundreds — if not thousands — of mobile assets doesn't have to be complex, thanks to VisibilityIQ Foresight.**

From a single cloud-based view, you'll see more device data from more sources than anywhere else and have it instantly translated into action-ready insight. Knowing what to do next is as simple as seeing red for a device needing immediate attention, yellow for precautions and green for optimal circumstances. No more surprises. No more guesswork. An EMM solution alone can't deliver as much.

You'll even be able to glimpse into the future. That's because VisibilityIQ Foresight collects historical data over time. Use it to accurately forecast tomorrow's needs and catch today's problems before they impact your business.



---

**Aggregate all device data onto one color-coded, cloud-based view.**

---



---

**Turn big data into actionable insights.**

---



---

**Use historical data to predict and shape your future.**

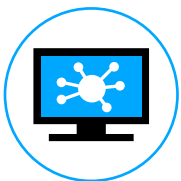
---





## One Complete View – Clear and Simple

Know at a glance your entire fleet of devices' location, condition and utilization. VisibilityIQ™ Foresight pulls from more data sources than any other service and translates it into instant, actionable intelligence. From a single, cloud-based, color-coded, business intelligence tool view, you'll clearly understand what's happening, so you'll see what's needed next. Gaining insight is as easy as red for immediate attention, amber for caution and green for optimal performance. You don't even need to be using the online business intelligence tool to stay informed. VisibilityIQ Foresight will email you alerts when critical action is needed.



**Uncover all  
device metrics  
in one view.**



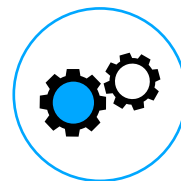
**See what an  
EMM alone can't  
show you.**



**Receive alerts  
by email.**



**Navigate  
with ease.**



**Customize  
views by roles.**

## You Don't Have to Be a Data Analyst to Decipher the Data.

Yes, you may have an EMM or be able to access device metrics data. But do you have clear answers to your device questions? With VisibilityIQ™ Foresight, you don't have to be an IT expert to translate what your device data is saying. You'll instantly know. Whether you have an EMM or not, you can access and navigate device data and analytics with ease. Pull action-ready reports on your own. And effortlessly create role-based access for different departments.



**Get guidance from data-driven intelligent analytics.**



**Optimize device availability and distribution to boost operations.**



**Access your fleet of devices with one clear and simple view.**



**Monitor WiFi® coverage, critical battery events, memory and more to maximize operations.**





## Predict It to Prevent It.

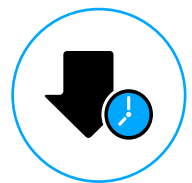
What if you had a way of predicting what might happen to your devices? With VisibilityIQ™ Foresight, trends tracked over time make patterns easy to spot. By analyzing historical insight, you can replace reactive with proactive management. Prevent costly device downtime before it impacts your business and don't get caught off guard by unforeseen events.



**Catch problems before they happen.**



**Properly allocate resources.**



**Avoid unforeseen downtime.**



**Forecast seasonal demands.**

## Open Your Eyes to New Possibilities.

Squeeze every minute out of every day with the help of Zebra VisibilityIQ™ Foresight. You'll have the eagle-eye vision and proactive power to course-correct issues in advance. And that adds up to greater uptime, savings and productivity.



**Increase device availability:** Locate devices in a split second and verify that they're ready to work their best.



**Amp up productivity:** Now, when batteries need recharging or replacing, you'll know well in advance, before they can interrupt business.



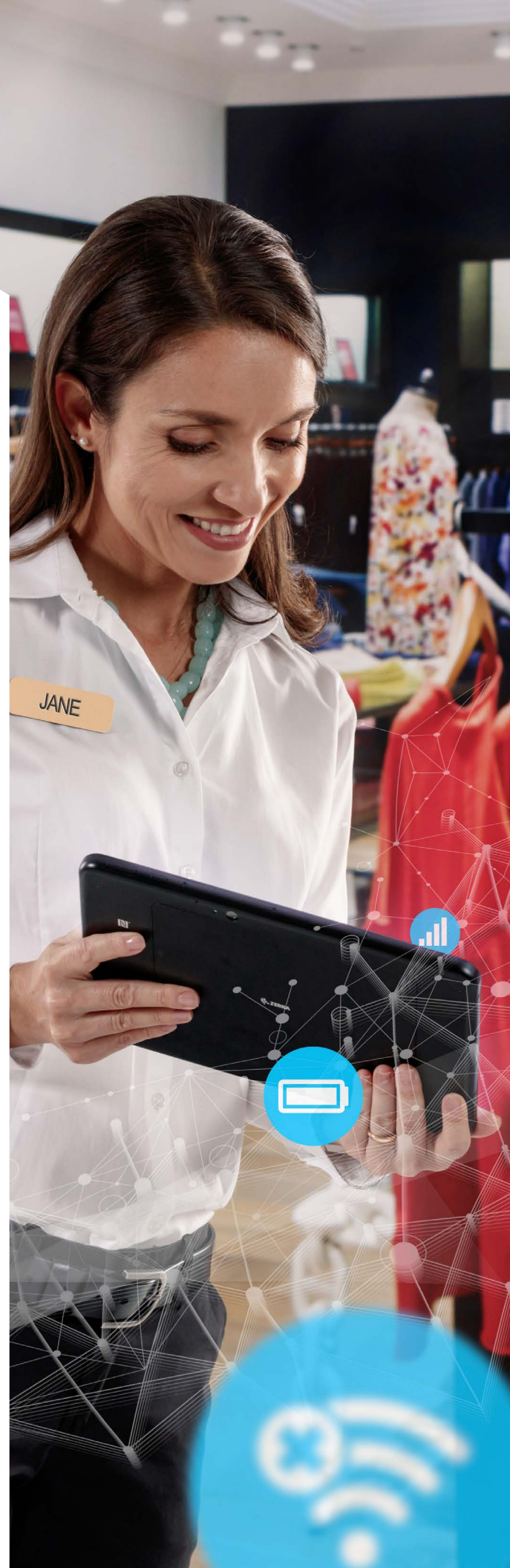
**Stop wasting time on downtime:** Device failure isn't an option and won't be when you see what action to take to curtail device issues.



**Optimize device performance:** Monitor the WiFi® connectivity and memory of devices to uncover and resolve issues that interfere with work performance.



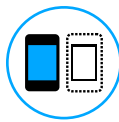
**Make better use of your resources:** Track the utilization of devices by location to spot which ones to transfer to those employees in need.







Let VisibilityIQ™ Foresight show you how to maximize your investment in devices.



**Right-size inventory — and budgets:** Get an accurate picture of how many spare devices you really need and put an end to overspending.



**End unnecessary repairs:** By detecting which location's devices come back from repair with no fault found, you can identify and fix the root cause — typically workers who need retraining.



**Plan for seasonal trends:** How many more devices will you need during your busy season? Let your historical device data tell you.



**Tighten security:** Pinpoint and wipe clean lost or stolen devices to mitigate the risk of data breaches.



**Free IT to focus on important tasks:** Alleviate IT of the need to pull reports and decipher device data, so they can tackle more pressing issues.

Visit [www.zebra.com/VisibilityIQ-Foresight](http://www.zebra.com/VisibilityIQ-Foresight)





**Zebra**  
**VisibilityIQ™**  
**OneCare™**  
Powered by Zebra Savanna™

## Set Your Sights on Greater Device Uptime.

Uptime, confidence and savings — that's what you get with Zebra OneCare™ maintenance plans. You protect business-critical devices and eliminate disruptions and unplanned expenses. Zebra OneCare covers repairs, technical and software support, as well as security protection. With Zebra OneCare, you gain up to 5+ years of repair and security support to keep devices and data confidential.

But device repairs and security aren't enough. You need to track repair issues, technical support cases, timelines and LifeGuard™ for Android™ security updates. Only then can you retrain employees to minimize the rate and costs of No Fault Found and tighten device security. Included in your Zebra OneCare maintenance plans for Zebra Mobile Computing Devices and Scanners is VisibilityIQ OneCare, which gives you that insight. From one customizable, cloud-based view, you can access repair, case reports, contracts renewals, security reports, and more, to see and seize opportunities to improve your operations.



**Sidestep downtime  
with service and  
support.**



**Defend your devices and  
data from cyberattacks  
with LifeGuard.**



**Reduce unnecessary  
repairs and expense.**

Take a look at what VisibilityIQ OneCare can do for your organization.

Visit [www.zebra.com/ZebraOneCare](http://www.zebra.com/ZebraOneCare)





See why smoother operations start with clearer device data.

Zebra VisibilityIQ™ Foresight supports mobile computing devices and Zebra Link-OS printers.

\* Zebra VisibilityIQ OneCare is available for Zebra mobile computers and scanners.



NA and Corporate Headquarters | +1 800 423 0442 | [inquiry4@zebra.com](mailto:inquiry4@zebra.com)

ZEBRA and the stylized Zebra head are trademarks of Zebra Technologies Corp., registered in many jurisdictions worldwide. All other trademarks are the property of their respective owners. ©2021 Zebra Technologies Corp. and/or its affiliates. All rights reserved. 01/2021