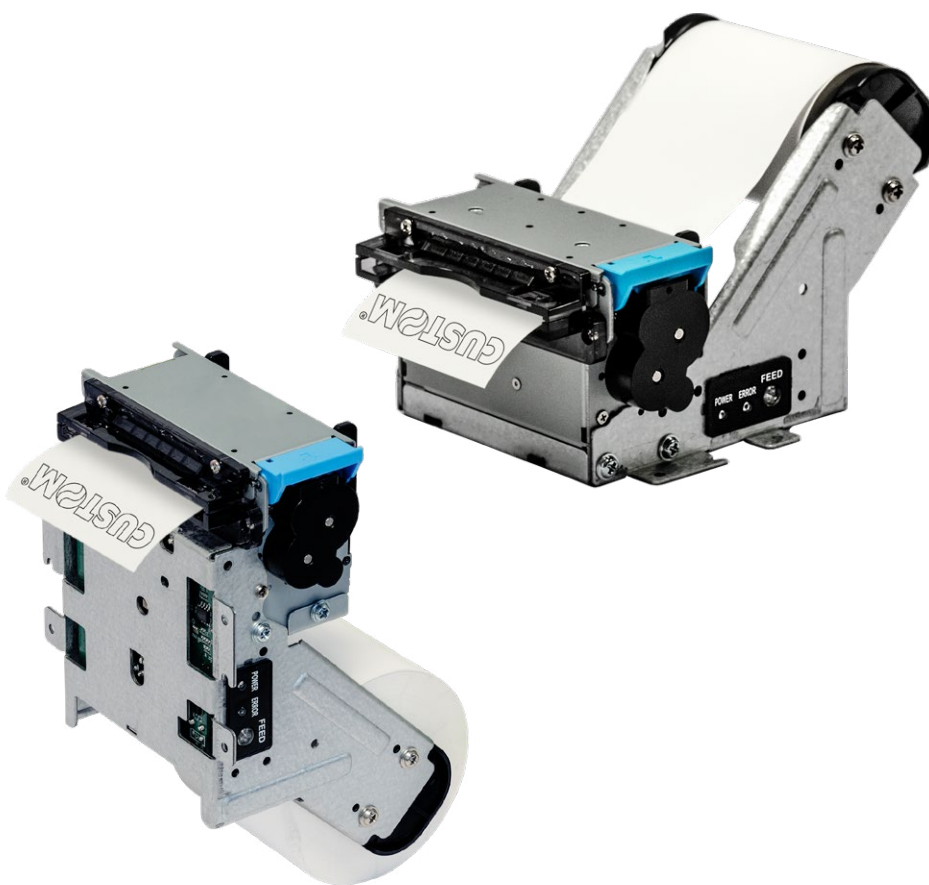


KX60

60mm Receipt/Ticket Kiosk Printer



Applications

- Vending machines
- Kiosk self-service
- Gas stations
- Gaming machines
- Parking meters
- Queue management systems

KX60 is the **ultra-lightweight and super compact design** receipt and ticket printer. Its **robust cutter**, easy-to-inspect design, and integrated **roll holder**, make it a reliable and flexible device.

Key points

Ultra-compact

design

Robust cutter

full and partial cutting

Integrated

roll holder and mouth

Two models

horizontal (H) and vertical (V)

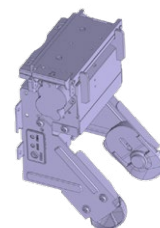
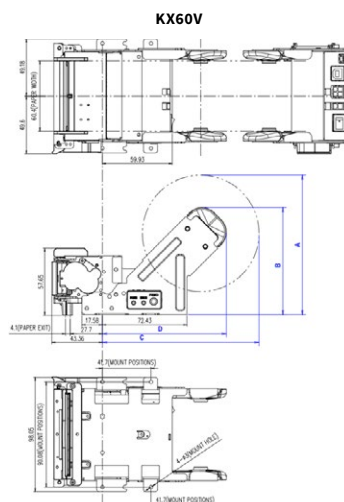
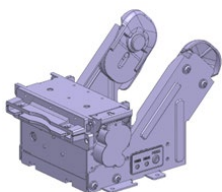
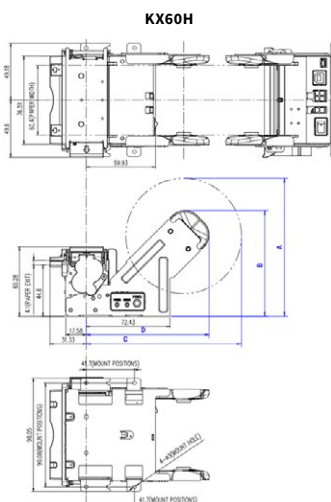
Easy

to inspect and use design

KX60 - 60mm Receipt/Ticket Kiosk Printer

Features

Printing method	Thermal with fixed head
Resolution	203 dpi
Printing speed	max 200 mm/s
Paper width	60 mm
Paper thickness	50 to 120 µm
Roll diameter	up to 100 mm
Printing direction	Standard, reversed
Interfaces	Serial RS232 / USB 2.0 full speed
Barcodes	UPC-E, EAN8, EAN13, CODE39, CODE93, CODE128, ITF, CODABAR, PDF417, QR CODE
Character Set	European, English, American, Japanese, Korean
MTBF Cutter	1M cuts, full or partial cutting
MTBF Head	100 Km (100M Pulses)
Sensors	Paper presence, near paper end, blackmark, door opening
Drivers	CUPS Linux (32/64 bit): Debian, Redhat; Android drivers; Windows Driver, Printer Driver Installer
Utility	Memory switch setting Utility, Logo setup tool, Firmware update
Dimensions (with 100 mm paper roll)	KX60H: 98.1 mm (L) x 151.3 mm (W) x 119.2 mm (H) KX60V: 98.1 mm (L) x 119.2 mm (W) x 177.1 mm (H)
Weight	380 g



Available models

P/N	Description
915PF010100300	PRINTER KX60 HORIZONTAL USB RS232 WITH ROLL HOLDER
915PF010200300	PRINTER KX60 VERTICAL USB RS232 WITH ROLL HOLDER

Accessories

P/N	Description
963GE020000071	POWER SUPPLY 60W MSO+RC CONNECTOR DIN
26900000000005	CABLE ADAPTER POWER SUPPLY
976PF010000001	RS232 CABLE DB9-MOLEX 4PIN

Scan or click the QR CODE and find out more about **CUSTOM**

